

Never too small to STAND tall!



MPS *More*
maxX



Concepts
Motion



Never too small to STAND tall!



The allNEW MPS Mini Maxx - Multi-Position Power Standing System is now available exclusively on the ROVI A3 base. Our innovative, highly adjustable Mini Maxx system combines a power standing function with a full range of power positioning solutions, all in a compact design that offers our smallest clients a unique combination of independence, function and accessibility.

Our MPS Mini Maxx system (Group 3 under Medicare Guidelines) combines enhanced mobility with the option to achieve a standing position throughout the day, expanding the opportunity for increased frequency of weight bearing positions and the potential for numerous medical benefits that weight bearing positions may provide, including better bone health, greater joint mobility, enhanced renal/bowel function and pain management.



ROVI A3 BASE SPECIFICATIONS

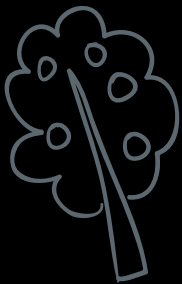
HCPCS Codes	K0856, K0861
Suspension System	Active Ride Control (ARC)
Base Width	25.5"
Base Length	36.5"
Drive Wheel Size	14"
Caster Wheel Size (front/rear)	6"
Base only Turning Radius	20.5"
Drivetrain	4-pole EAD Motors
Batteries	2 x M34
Battery Charger	8A, Stand Alone
Batteries Weight (each)	38.5 lbs (M34)
Range ⁽¹⁾	17.7 miles
Weight Capacity (base only)	200 lbs
Base Weight (w/o batteries)	159 lbs
Ground Clearance	3"
Maximum Speed on standUP Maxx	5.8 mph

⁽¹⁾Actual driving range and speed may vary due to factors such as user weight, type and grade of terrain, battery condition & charge level; type and condition of the drive wheels, and variations in the drive and control systems.

SYSTEM FEATURES

CG Tilt	45°
Recline with ESR*	165°
Standing	•
Power Adjustable Seat Height	7"
Power Elevating Belt Drive Center Mount Articulated Foot Platform	•
Seat Width	12" - 17" (Fully adjustable)
Seat Depth	12" - 17" (Fully adjustable)
Seat-to-Floor	as low as 18.5"
Weight Capacity	Up to 200 lbs

*ESR Extended Shear Reduction



BLIZZARD WHITE

MATTE BLACK

SOLAR YELLOW

MOTION GREEN

ORIGINAL ORANGE

BRIGHT BLUE

RED DELICIOUS

PARTY PINK

PURPLE REIGN



7" ELEVATING SEAT



45° CG TILT



165° RECLINE



POWER CENTER MOUNT

Accessibility within Reach!



Keeping everyone safe

Removable Chest Bar — The removable, height and depth adjustable Chest Bar is designed to safely secure the user while standing and offers angle adjustable depth to accommodate asymmetries. This feature can be removed or stowed to the side of the arm rest for transfer or when not in use.

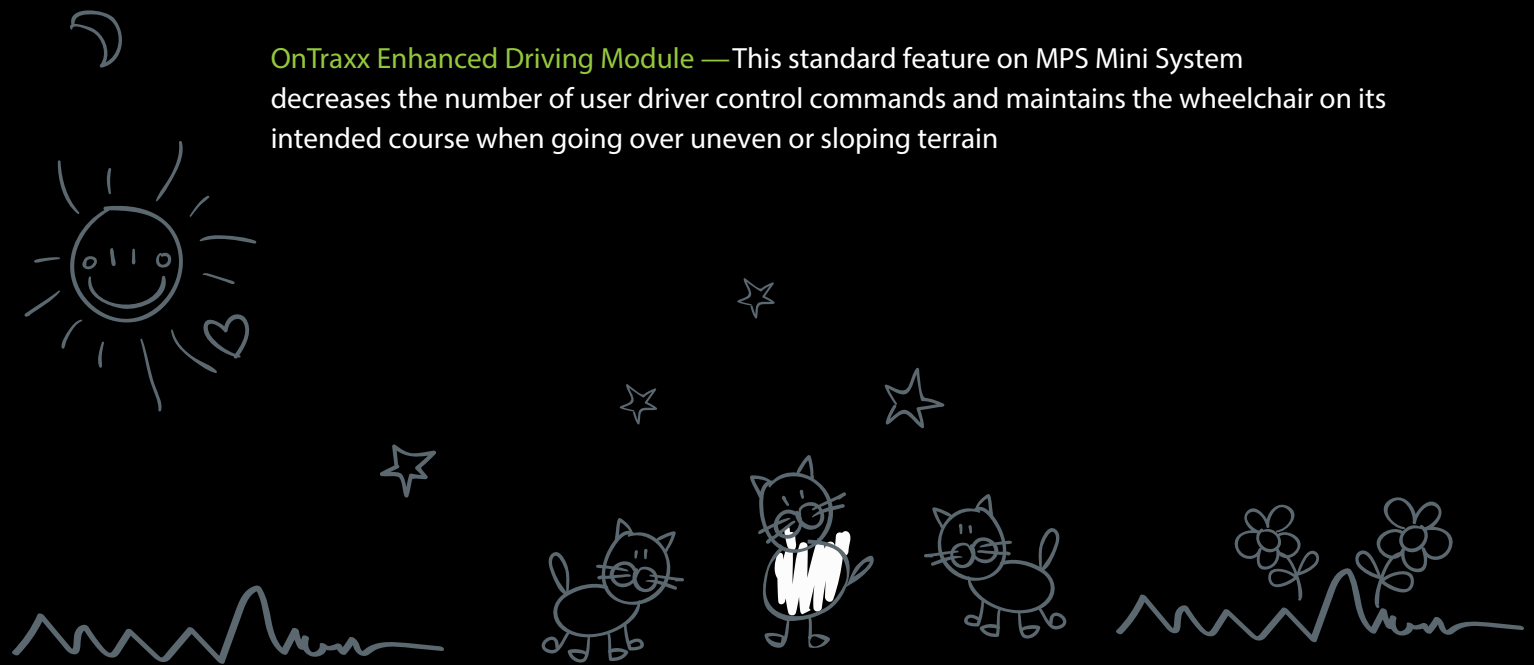
Chest Strap — The center-pull, push button adjustable 2 Point Padded Mini Chest Strap is height adjustable and provides anterior positioning support.

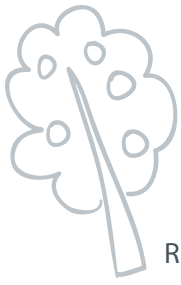
Removable Knee Block — The angle, height and depth adjustable Knee Block is designed to safely secure the user while standing and optionally offers 2" of independent height and depth adjustability to accommodate asymmetries.

Pelvic Belt — The center-pull, push button adjustable Lap Belt is mounted and provides anterior pelvic support.

Forward-locking Suspension System — Motion Concepts' Forward-locking Suspension System offers additional stability and safety by locking front suspension arms as the standing function is engaged. When system is not in a standing position the ROVI A3's ARC suspension is fully functioning for maximum performance and climbing capability.

OnTraxx Enhanced Driving Module — This standard feature on MPS Mini System decreases the number of user driver control commands and maintains the wheelchair on its intended course when going over uneven or sloping terrain





REMOVABLE CHEST BAR



CHEST STRAP



PELVIC BELT



REMOVABLE KNEE BLOCK



OnTraxx
ENHANCED DRIVING MODULE

FORWARD-LOCKING
SUSPENSION SYSTEM



Safety without Compromise!



... little things make a big difference



Function

From sit to stand the MPS' Mini ESR Extended Shear Reduction and foot platform are synchronized to provide a smooth transition with minimal shear.



Seat depth is adjusted at the rear of the system to maintain a consistent relationship between the body's natural pivots at the user's knees and feet for a smooth standing motion.

Motion Concepts' positioning accessories and a full line of award-winning **Invacare® Matrix® Mini pediatric seating products** meet the unique needs of our smaller clients.



Maxx Style Ultra Track allows for mounting of lateral thoracic supports and other positioning accessories.



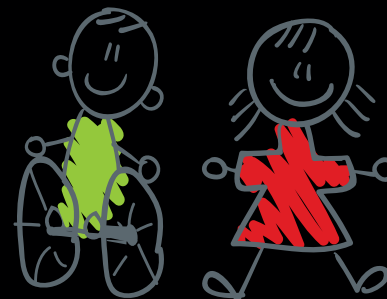
Maxx Style Ultra Rail offers slotted design for mounting of positioning accessories such as lateral, knee or hip supports for additional support and stability.

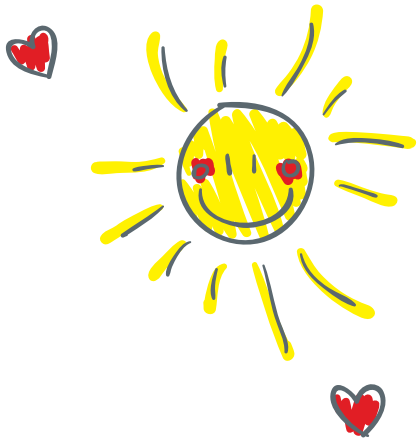
Active Ride Control (ARC) independent suspension system and powerful 4-pole motors work together to provide superior climbing ability and uncompromising stability with a smooth, powerful ride.

Convenience



The MPS Mini's Retractable Knee Block Mount and Storage Bracket allows the Knee Block to be removed and stored on the side of the system when the standing feature is not being used for a clean, uncluttered appearance.





MATRIX® SEATING

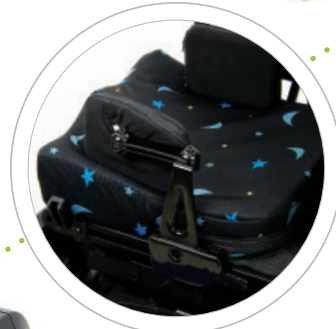


MAXX STYLE
ULTRA TRACK



OPTIONAL, CHEST BAR

STORAGE BRACKET
TO STOW
REMOVABLE KNEE BLOCK



MAXX STYLE
ULTRA RAIL

