

Zing

Size 1

Assembly Manual



PA5520 Zing MPS, PA5522 Zing Supine
PA5520 Zing MPS Tilt Table, PA5522 Zing Supine Tilt Table
PA5522 Zing Prone

Please ensure the Assembly Manual stays with the unit at all times.

SYMBOL/LABEL LEGEND



CAUTION/WARNING/ATTENTION



TYPE BF APPLIED PART



PINCHPOINT



HUMIDITY

SN

SERIAL NUMBER

CE

CONFORMITÉ EUROPÉENNE

MD

MEDICAL DEVICE



Waste of electrical and electronic equipment must not be disposed as unsorted municipal waste. It must be collected separately, and must be disposed as per local regulations. Contact your authorized representative for information concerning the decommissioning of your equipment.



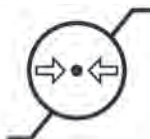
TEMPERATURE



DATE OF MANUFACTURE



SEE INSTRUCTIONS FOR USE



ATMOSPHERIC PRESSURE



MANUFACTURER

Rx only

PRESCRIPTION ONLY



POTENTIALLY HOT SURFACE

Accessible surfaces which may exceed 105°F/41°C and could be a hazard to persons with skin damage or not having sensation.

CERTIFICATION LABEL/UNIQUE DEVICE IDENTIFICATION LABEL

Manufacturer: Altimate Medical, Inc 262 West First Street Morton, MN 56270 507-697-6393	CE MD 2021	
SN 0000000000		
00000000000000000000		
Model: Height Range: Max. Weight Limit:	Approx. Max. Mass of Unit & Weight Limit: 0000	

Serial Number

Item Number
Item Description

Unique Identifier

Table of Contents

Assembly 1

Parts Detail..... 9

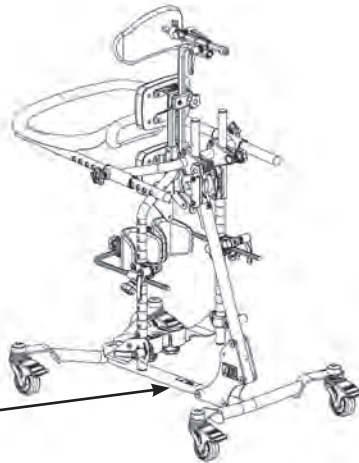
IMPORTANT **Zing Warranty Registration** **FREE GIFT Upon Completion**

(warranty & offer valid in the United States only)

IMPORTANT! Please complete and return within 30 days. To receive the free gift, please fill out all information. Thank You.

To register online go to zingstanders.com/warranty

**or Scan the
QR Code**



Serial number is located on the frame.

Date Purchased _____ Serial # _____

Assembly

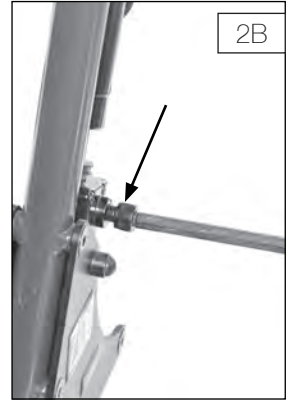
1. Remove everything out of the box and place the mast onto the floor as shown.

Remove all plastic wrap.



2A. If the gas spring lockout was ordered, it will be shipped in the locked position. Pull the lock out and turn to unlock.

2B. If the Gas Spring Lockout was not ordered, remove the bolt from the lower part of the cylinder on the mast as shown, discard bolt.



3. Remove the foot pedal and bolts from the polybag and place the foot pedal onto the bottom of the gas spring as shown.

Line up holes and insert the 2 bolts, start both bolts first, then tighten securely.



4. For the Supine and Prone units, place mast on end like shown in step 6, for the MPS and TT, depress the foot pedal and allow the mast post to come up to a vertical position.



5. Remove the bag of hardware from the wheelbase. It contains the 4 bolts for assembly.



6. Turn the wheelbase over and line up the short end with the foot pedal.



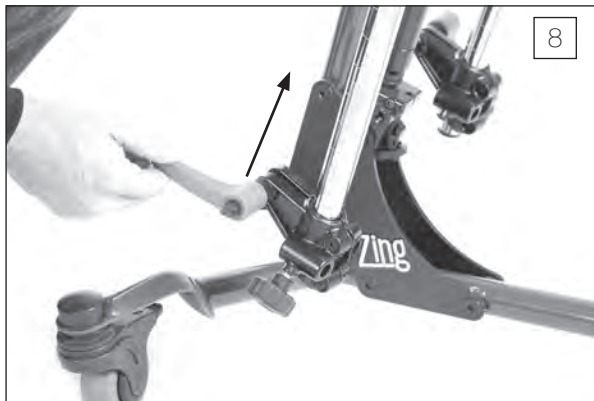
7A. Start all 4 bolts. Do not tighten at this time.

7B. Once all 4 bolts have been started, tighten them securely.

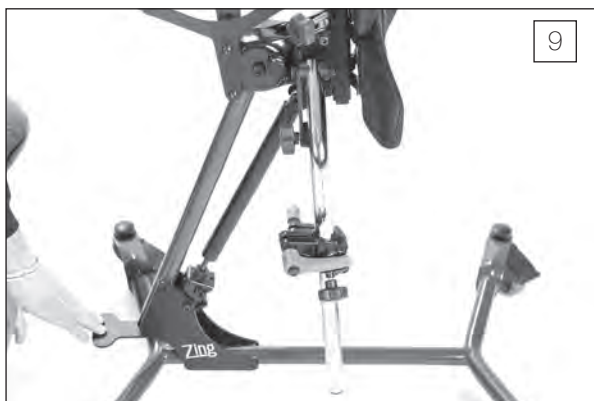
Place unit onto its wheels and lock casters.



8. If the multi-adjustable knee pads or calf pads were ordered, loosen knobs on clamps and move up into position.



9. For the Prone and Supine units depress the foot pedal to allow the legs to go past 90°.



10. Tighten the lug on the side of the mast securely.



11. If the calf pad with knee strap was ordered, place the assembly onto the legs as shown.



12. Once the calf pad with knee strap is in position, tighten knobs securely.



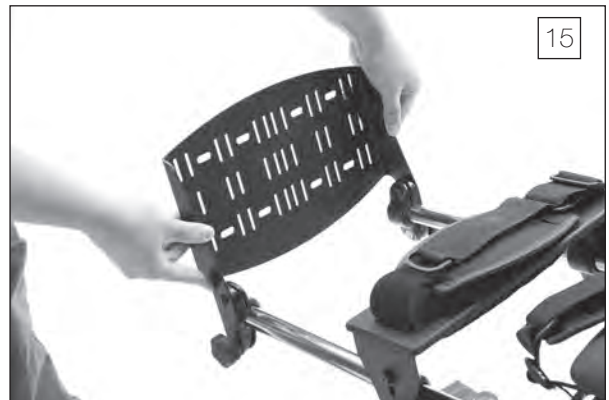
13. If the independent adjustable calf pads were ordered, loosen the ratchet handles on the clamps and position as shown. Insert the calf pads into the inside of the clamp. Tighten securely.



14. Insert multi-adjustable knee pads into the outside of the clamp. Tighten securely.



15. If the platform foot plate was ordered, place the assembly onto the legs as shown. Tighten securely.



16. If the multi-adjustable foot plates were ordered, place each foot plate onto the legs with the handles facing out. Tighten knobs securely.



17. If the hip supports were ordered, insert hip supports into the bracket behind the pelvic pad. Tighten securely with the knobs or set screw kit (600673).



18. If the lateral supports were ordered, insert lateral supports into the bracket behind the upper body support pad. Tighten securely.



MPS, Supine or Tilt Table

19A. If the black molded tray was ordered, insert the two tray arms into the tray bracket as shown.

19B. Flip the gray plunger back into the locked position and tighten knob securely.



MPS, Supine or Tilt Table

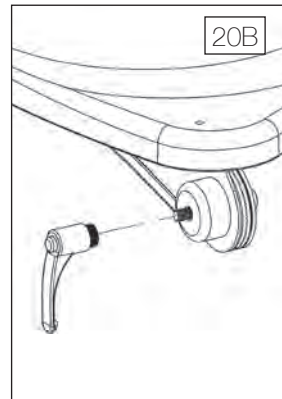
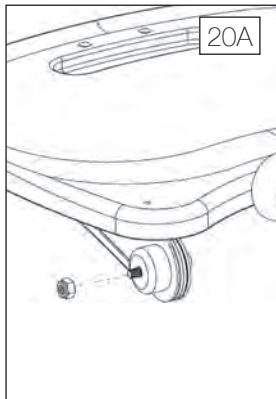
20A. If the swing-away tray was ordered, remove the nut from the bolt on the tray arm and discard the nut. Make sure all other hardware stays on the bolt.

20B. Place the ratchet handle onto the bolt and tighten securely. Repeat steps for the other side.

21A. There are two screw knobs in the parts bag. Turn the screw knobs slightly into the tray bracket on the unit.

21B. Loosen the adjustment knob under the tray, extend the tray and place the tray bracket into the base. Tighten securely.

Note: Make sure washer is in place.



Prone

22A. Remove 4 bolts from bottom of the tray, set bolts aside.

22B. Place tray onto bracket as shown.



Prone

23. Start 2 bolts closest to the pads, then start front 2 bolts. Once all bolts have been started, tighten securely.



Prone

24A. If the optional push handle was ordered, remove the bolts from the bracket as shown.



24B. Tilt one side of the push handle down to line up with the hole in the mast. Insert bolt and place nut onto bolt. Tighten securely. Repeat steps for the other handle.



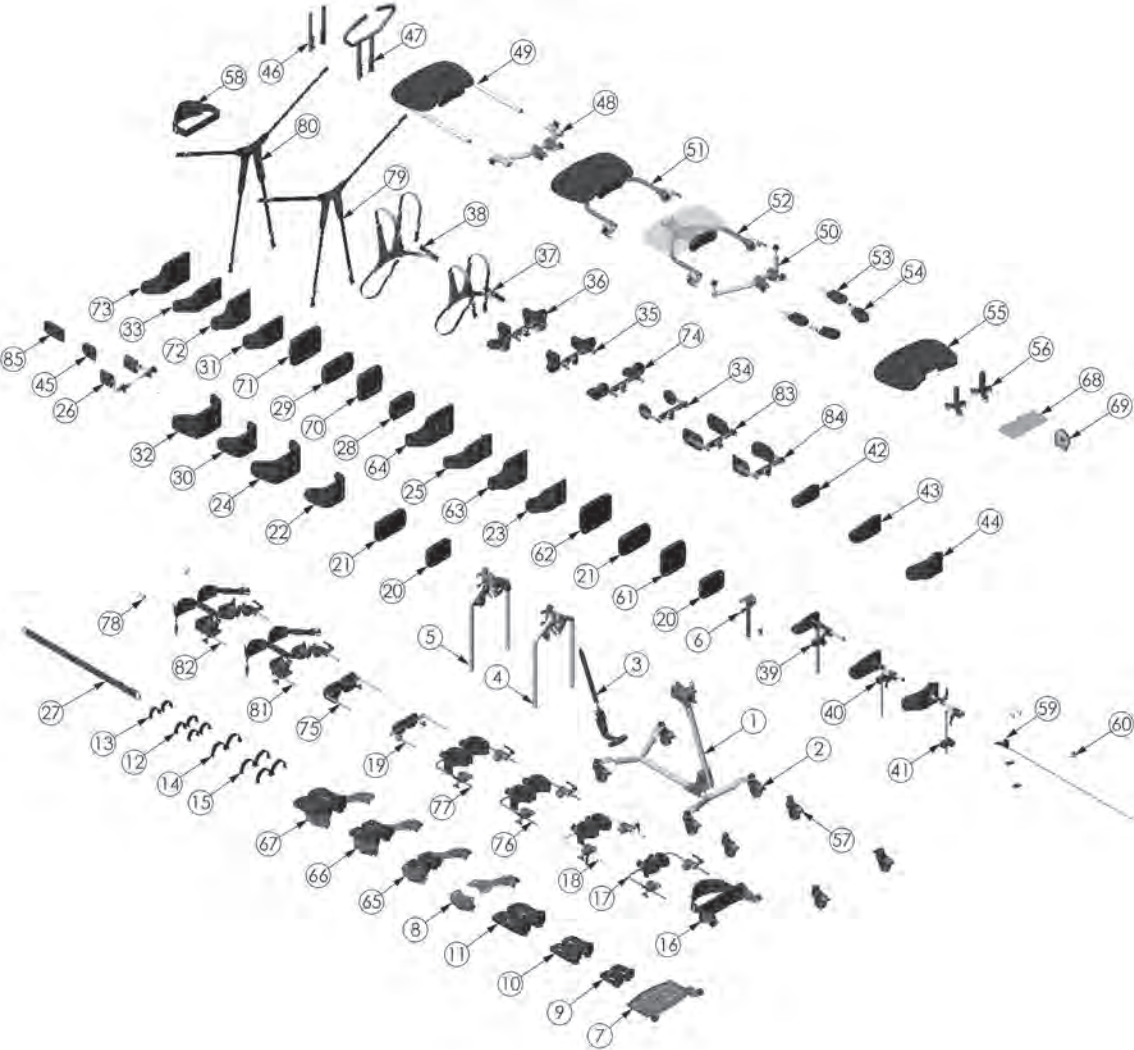
25A. If the Zing Tilt Table (TT) was ordered, place the bracket for the planar head support onto the upper body support pad, making sure the spacers are in between the bracket and pad.



25B. Tighten bolts securely.



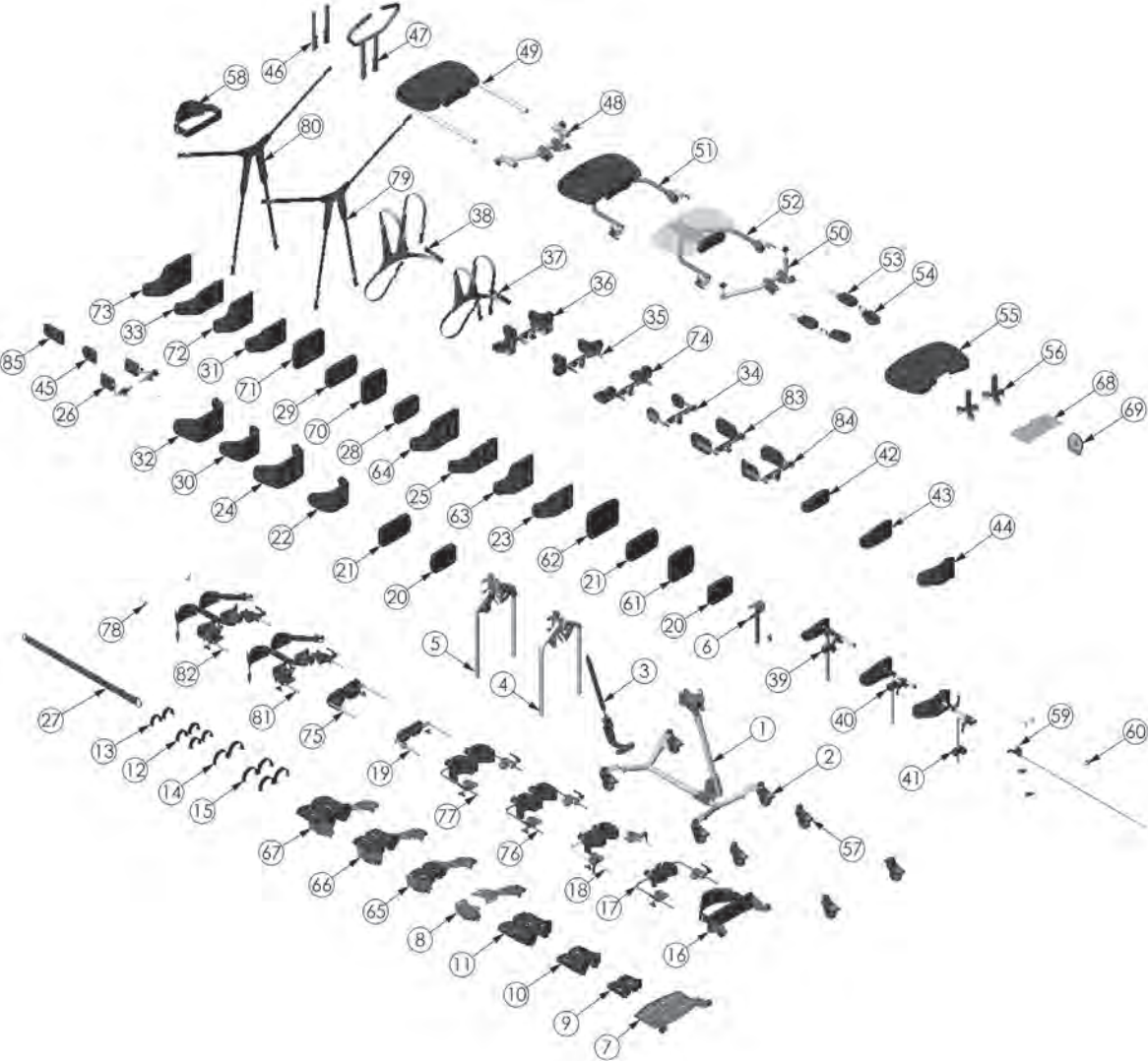
Parts Detail-MPS (multi-position stander)



Parts Detail

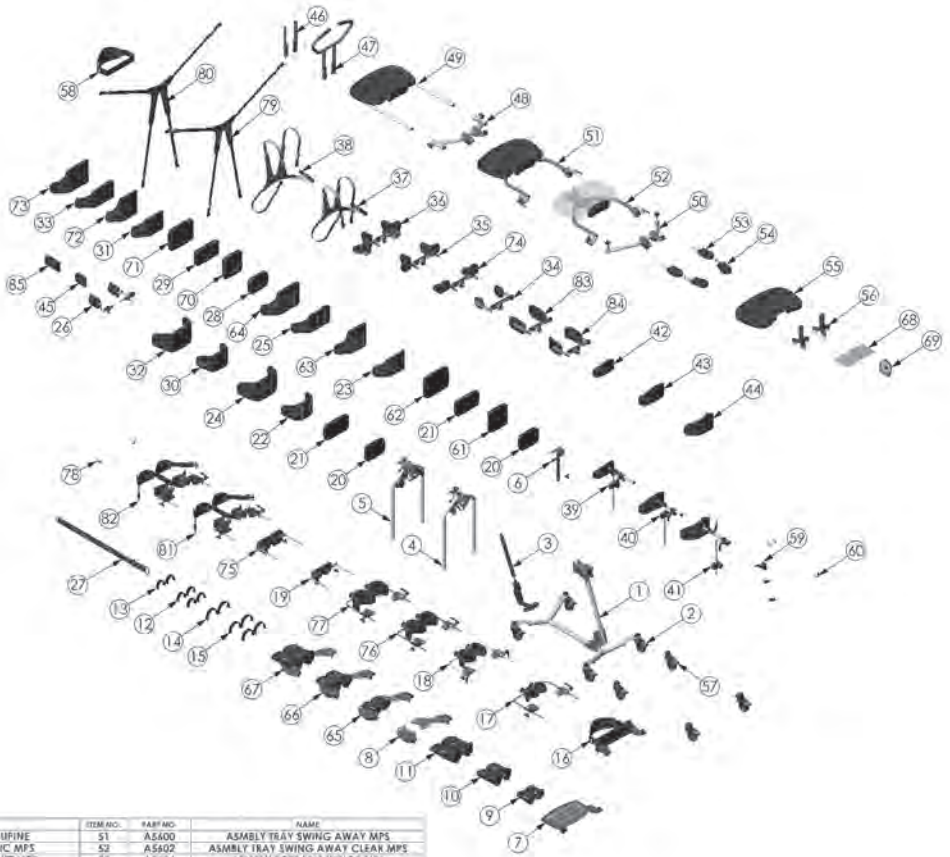
ITEM NO.	PART NO.	NAME	ITEM NO.	PART NO.	NAME
1	A5520	ASMBLY BASE ZING FORWARD PRONE	51	A5600	ASMBLY TRAY SWING AWAY MPS
2	A5526	ASMBLY CASTERS BASIC MPS	52	A5602	ASMBLY TRAY SWING AWAY CLEAR MPS
3	A5528	ASMBLY GAS SPRING LIFT MPS	53	A5604	ASMBLY FOREARM WINGS MPS
4	A5530	ASMBLY LEGS MPS STANDARD	54	A5606	ASMBLY FOREARM WINGS CLEAR MPS
5	A5532	ASMBLY LEGS MPS ABDUCTION	55	A3038	PADDED SLIP COVER TRAY MPS
6	A5534	ASMBLY MAST MPS	56	NG50042	SUPPORT GRIP OPTION
7	A5536	ASMBLY PLATFORM FOOT PLATE MPS	57	A5608	ASMBLY CASTERS DIRECTIONAL MPS
8	A5538	ASMBLY FOOT PLATE MPS MULTI-ADJ	58	A5610	ASMBLY CHEST STRAP MPS
9	A5540	ASMBLY FOOT PLATE MPS EI	59	A5612	ASMBLY DUAL LIFT CONTROL MPS XS
10	A5542	FOOT HOLDERS 7.75" L X 3.25" W	60	A5614	ASMBLY GAS SPRING LOCK OUT
11	A5544	FOOT HOLDERS 9.75" L X 4" W	61	A5616	ASMBLY PAD PLANAR 7" X 7"
12	A5546	ASMBLY SECURE FOOT STRAPS XS	62	A5618	ASMBLY PAD PLANAR 7" X 9"
13	A5548	ASMBLY FOOT STRAPS XS	63	A5620	ASMBLY CONTOUR BACK 7" XS
14	T50080	ASMBLY FOOT STRAP PED	64	A5622	ASMBLY CONTOUR BACK 7" SM
15	T50082	ASMBLY FOOT STRAP SECURE PED	65	A5624	MULTI-ADJUSTABLE FOOT PLATE 6" L X 3" W
16	A5550	ASMBLY KNEE PAD SOFT MPS	66	A5626	MULTI-ADJUSTABLE FOOT PLATE 7.75" L X 3.25" W
17	A5556	ASMBLY KNEE MULTI ADJUSTABLE XS	67	A5628	MULTI-ADJUSTABLE FOOT PLATE 9.75" L X 4" W
18	A5558	ASMBLY KNEE MULTI-ADJUSTABLE SM	68	80809	TOOL POUCH
19	A5560	ASMBLY CALF PAD INDEPENDENT MPS	69	80246	SEAT ANGLE LOCATOR
20	A5562	ASMBLY PAD PLANAR 5" X 7"	70	A3045	SLIP COVER PLANAR 7" X 7"
21	A5564	ASMBLY PAD PLANAR 5" X 9"	71	A3046	SLIP COVER PLANAR 7" X 9"
22	A5566	ASMBLY CONTOUR PELVIC 5" XS	72	A3047	SLIP COVER CONTOUR BACK 7" XS
23	A5568	ASMBLY CONTOUR BACK 5" XS	73	A3048	SLIP COVER CONTOUR BACK 7" SM
24	A5570	ASMBLY CONTOUR PELVIC 5" SM	74	A5630	ASMBLY ELBOW/ ARM PAD MPS XS
25	A5572	ASMBLY CONTOUR BACK 5" SM	75	A5678	ASMBLY CALF PAD 4.5" X 4.5"
26	A5574	ASMBLY HIP GUIDES MPS XS	76	A5729	MULTI-ADJ KNEE PADS 4.25"
27	A3011	POSITIONING BELT ADJUSTABLE XS	77	A5730	MULTI-ADJ KNEE PADS 5"
28	A3028	SLIP COVER PLANAR 5" X 7"	78	A5731	ASMBLY KNEE DEPTH STOP
29	A3029	SLIP COVER PLANAR 5" X 9"	79	T50302	NON-STRETCH X-STYLE CHEST VEST 9.5" L X 9" W
30	A3030	SLIP COVER CONTOUR PELVIC 5" XS	80	T50304	NON STRETCH X-STYLE CHEST VEST 11" L X 9.5" W
31	A3031	SLIP COVER CONTOUR BACK 5" XS	81	A5734	ASMBLY POSTERIOR KNEES 3.5" ZING 1
32	A3032	SLIP COVER CONTOUR PELVIC 5" SM	82	A5736	ASMBLY POSTERIOR KNEES 5" ZING 1
33	A3033	SLIP COVER CONTOUR BACK 5" SM	83	A5743	ASMBLY LATERAL GUIDES MPS SM
34	A5576	ASMBLY LATERAL GUIDES MPS SM	84	A5744	ASMBLY LATERAL GUIDES MPS SM
35	A5578	ASMBLY LATERAL W/ ELBOW PAD MPS XS	85	B3049	SLIP COVER 6" LATERAL PAD
36	A5580	ASMBLY LATERAL W/ ELBOW PAD MPS XS			
37	T50086	X-STYLE CHEST VEST 9.5" L X 9" W			
38	T50088	X-STYLE CHEST VEST 11" L X 9.5" W			
39	Y5626	ASMBLY HEAD SUPPORT XS			
40	Y5628	ASMBLY HEAD SUPPORT SMALL			
41	A5586	ASMBLY HEAD REST CONTOUR SM			
42	A3035	SLIP COVER HEAD REST 5" H X 8" W			
43	A3036	SLIP COVER HEAD REST 6" H X 10" W			
44	A3037	COVER HEAD REST FORM TO FIT			
45	A3039	SLIP COVER 3.5" LATERAL PAD			
46	A5592	ASMBLY TRAY ASSEMBLY MOUNT MPS			
47	A5594	ASMBLY PUSH HANDLE MPS			
48	A5595	ASMBLY TABLE MOUNT BASIC MPS			
49	A5596	TRAY BLK MOLDED 11" L X 19" W			
50	A5599	ASMBLY TABLE MOUNT TILT MPS			

Parts Detail-Tilt Table MPS (multi-position stander)



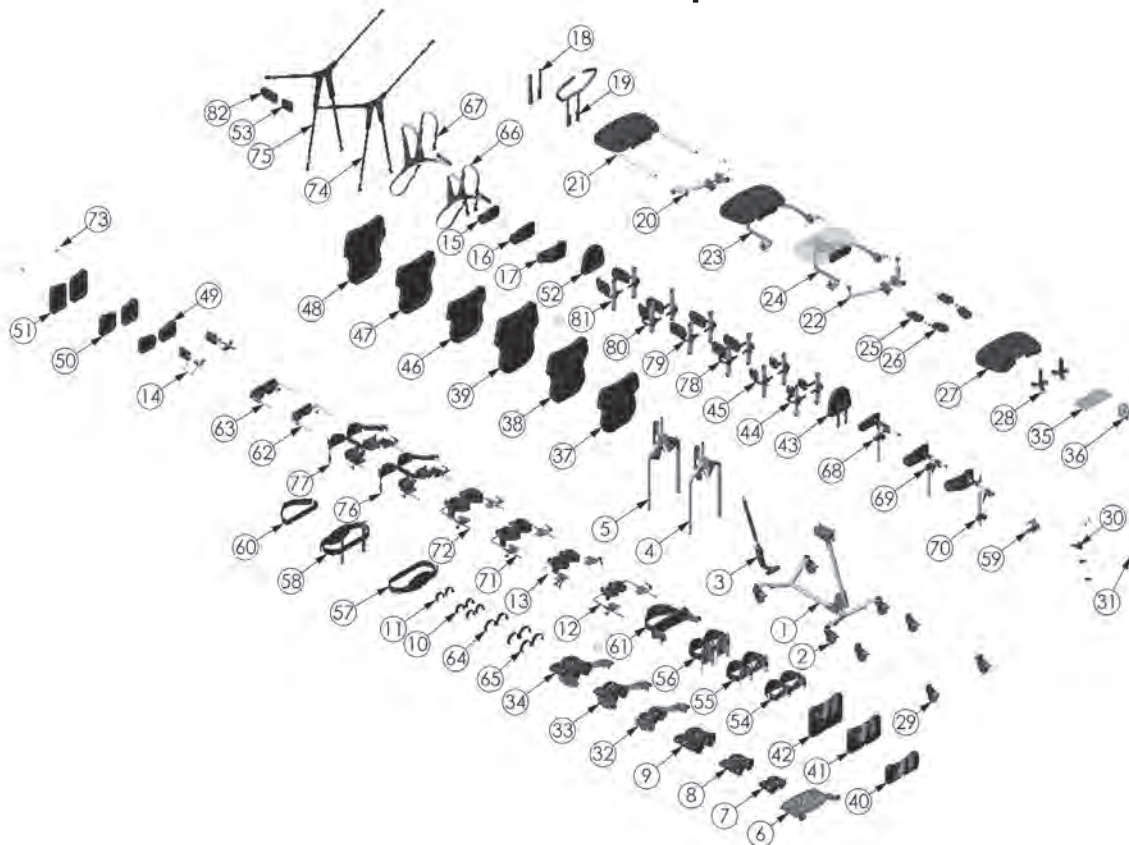
ITEM NO.	PART NO.	NAME	ITEM NO.	PART NO.	NAME
1	A5520	ASMBLY BASE ZING FORWARD PRONE	73	A5731	ASMBLY KNEE DEPTH STOP
2	A5526	ASMBLY CASTERS BASIC MPS	74	T50302	NON-STRETCH X-STYLE CHEST VEST 9.5" L X 9" W
3	A5528	ASMBLY GAS SPRING LIFT MPS	75	T50304	NON-STRETCH X-STYLE CHEST VEST 11" L X 9.5" W
4	A5532	ASMBLY LEGS TT STANDARD	76	A5734	ASMBLY POSTERIOR KNEES 3.5" ZING 1
5	A5534	ASMBLY LEGS TT ABDUCTION	77	A5736	ASMBLY POSTERIOR KNEES 5" ZING 1
6	A5536	ASMBLY PLATFORM FOOT PLATE MPS	78	A5745	ASMBLY LATERAL GUIDES TT 4" - 8"
7	A5540	ASMBLY FOOT PLATE MPS EL	79	A5746	ASMBLY LATERAL GUIDES TT 4" - 8"
8	A5542	FOOT HOLDERS 7.75" L X 3.25" W	80	A5747	ASMBLY LATERAL GUIDES TT 4-8" CURVED
9	A5544	FOOT HOLDERS 9.75" L X 4" W	81	A5748	ASMBLY LATERAL GUIDES TT 4" - 8"
10	A5546	ASMBLY SECURE FOOT STRAPS XS	82	B3049	SLIP COVER 6" LATERAL PAD
11	A5548	ASMBLY FOOT STRAPS XS			
12	A5556	ASMBLY KNEE MULTI ADJUSTABLE XS			
13	A5558	ASMBLY KNEE MULTI-ADJUSTABLE SM			
14	A5636	ASMBLY HIP GUIDES TT XS			
15	A3035	SLIP COVER HEAD REST 5" H X 8" W			
16	A3036	SLIP COVER HEAD REST 6" H X 10" W			
17	A3037	COVER HEAD REST FORM TO FIT			
18	A5592	ASMBLY TRAY ASSEMBLY MOUNT MPS			
19	A5594	ASMBLY PUSH HANDLE MPS			
20	A5595	ASMBLY TABLE MOUNT BASIC MPS			
21	A5596	TRAY BLK MOLDED 11" L X 19" W			
22	A5599	ASMBLY TABLE MOUNT TILT MPS			
23	A5600	ASMBLY TRAY SWING AWAY MPS			
24	A5602	ASMBLY TRAY SWING AWAY CLEAR MPS			
25	A5604	ASMBLY FOREARM WINGS MPS			
26	A5606	ASMBLY FOREARM WINGS CLEAR MPS			
27	A3038	PADDED SLIP COVER TRAY MPS			
28	NG50042	SUPPORT GRIP OPTION			
29	A5608	ASMBLY CASTERS DIRECTIONAL MPS			
30	A5612	ASMBLY DUAL LIFT CONTROL MPS XS			
31	A5614	ASMBLY GAS SPRING LOCK OUT			
32	A5624	MULTI-ADJUSTABLE FOOT PLATE 6" L X 3" W			
33	A5626	MULTI-ADJUSTABLE FOOT PLATE 7.75" L X 3.25" W			
34	A5628	MULTI-ADJUSTABLE FOOT PLATE 9.75" L X 4" W			
35	80809	TOOL POUCH			
36	80246	SEAT ANGLE LOCATOR			
37	A5638	ASMBLY PAD ZING PLANAR 14" X 14"			
38	A5640	ASMBLY PAD ZING PLANAR 16" X 14"			
39	A5642	ASMBLY PAD ZING PLANAR 18" X 14"			
40	A5644	ASMBLY LEG PAD ZING TT 4"			
41	A5646	ASMBLY LEG PAD ZING TT 6"			
42	A5648	ASMBLY LEG PAD ZING TT 8"			
43	A5650	ASMBLY HEAD PAD ZING PLANAR			
44	A5652	ASMBLY LATERAL GUIDES TT 4" - 8"			
45	A5654	ASMBLY LATERAL GUIDES TT 7" - 11"			
46	A3063	SLIP COVER 14" X 14"			
47	A3064	SLIP COVER 16" X 14"			
48	A3065	SLIP COVER 18" X 14"			
49	A5660	ASMBLY SLIP COVERS LEG PAD 4" TT			
50	A5662	ASMBLY SLIP COVERS LEG PAD 6"			
56	A5664	ASMBLY SLIP COVERS LEG PAD 8"			
52	A3066	SLIP COVER PLANAR HEAD SUPPORT XS			
53	A3039	SLIP COVER 3.5" LATERAL PAD			
54	A5666	ASMBLY KNEE STRAP TT 4" PADS			
55	A5668	ASMBLY KNEE STRAP TT 6" PADS			
56	A5670	ASMBLY KNEE STRAP TT 8" PADS			
57	A5672	ASMBLY STRAP W/PAD 25" - 38"			
58	A5674	ASMBLY CHEST STRAP W/PAD TT			
59	A5676	ASMBLY HEAD REST MOUNT ZING TT			
60	A3062	POSITIONING BELT ADJUSTABLE TT			
61	A5560	ASMBLY CALF PAD INDEPENDENT MPS			
62	A5678	ASMBLY CALF PAD 4.5" X 4.5"			
63	A5550	ASMBLY KNEE PAD SOFT MPS			
64	T50080	ASMBLY FOOT STRAP PED			
65	T50082	ASMBLY FOOT STRAP SECURE PED			
66	T50086	X-STYLE CHEST VEST 9.5" L X 9" W			
67	T50088	X-STYLE CHEST VEST 11" L X 9.5" W			
68	Y5626	ASMBLY HEAD SUPPORT XS			
69	Y5628	ASMBLY HEAD SUPPORT SMALL			
70	A5586	ASMBLY HEAD REST CONTOUR SM			
71	A5729	MULTI-ADJ KNEE PADS 4.50" H X 5" W			
72	A5730	MULTI-ADJ KNEE PADS 5" H X 6" W			

Parts Detail-Supine



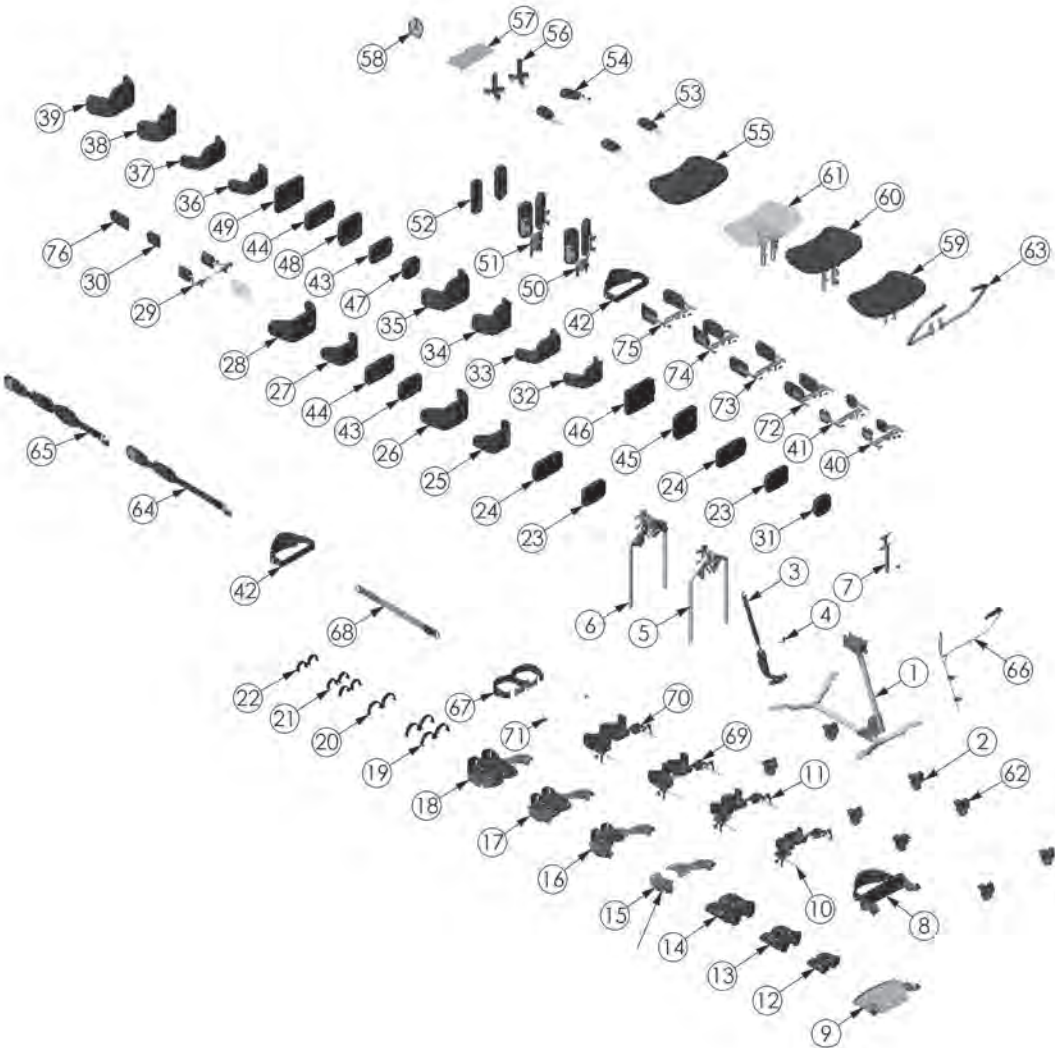
ITEM NO.	PART NO.	NAME	ITEM NO.	PART NO.	NAME
1	A5522	ASSEMBLY BASE DING SUPINE	51	A5600	ASSEMBLY TRAY SWING AWAY MPS
2	A5528	ASSEMBLY CASTERS BASIC MPS	52	A5602	ASSEMBLY TRAY SWING AWAY CLEAR MPS
3	A5528	ASSEMBLY GAS SPRING LIFT MPS	53	A5604	ASSEMBLY FOREARM WINGS MPS
4	A5530	ASSEMBLY LEGS MPS STANDARD	54	A5606	ASSEMBLY FOREARM WINGS CLEAR MPS
5	A5532	ASSEMBLY LEGS MPS ABDUCTION	55	A3038	PADDED SLIP COVER TRAY MPS
6	A5534	ASSEMBLY BRAST MPS	56	HS50042	SUPPORT GRIP OPTION
7	A5534	ASSEMBLY PLATFORM FOOT PLATE MPS	57	A5608	ASSEMBLY CASTERS DIRECTIONAL MPS
8	A5538	ASSEMBLY FOOT PLATE MPS MULTI-ADJ	58	A5610	ASSEMBLY CHEST STRAP MPS
9	A5540	ASSEMBLY FOOT PLATE MPS II	59	A5612	ASSEMBLY DUAL LIFT CONTROL MPS XS
10	A5542	FOOT HOLDERS 7.75" X 3.25"W	60	A5614	ASSEMBLY GAS SPRING LOCK OUT
11	A5544	FOOT HOLDERS 9.75" X 4"W	61	A5616	ASSEMBLY PAD PLANAR 7" X 7"
12	A5546	ASSEMBLY SECURE FOOT STRAPS XS	62	A5618	ASSEMBLY PAD PLANAR 7" X 9"
13	A5548	ASSEMBLY FOOT STRAPS XS	63	A5620	ASSEMBLY CONTOUR BACK 7" XS
14	T50080	ASSEMBLY FOOT STRAP PED	64	A5622	ASSEMBLY CONTOUR BACK 7" SM
15	T50082	ASSEMBLY FOOT STRAP SECURE PED	65	A5624	MULTI-ADJUSTABLE FOOT PLATE 6" X 3" X
16	A5550	ASSEMBLY KNEE PAD SOFT MPS	66	A5626	MULTI-ADJUSTABLE FOOT PLATE 7.75" X 7"
17	A5556	ASSEMBLY KNEE MULTI ADJUSTABLE XS	67	A5628	MULTI-ADJUSTABLE FOOT PLATE 9.75" X 4"W
18	A5558	ASSEMBLY KNEE MULTI ADJUSTABLE SM	68	B0809	TOOL POUCH
19	A5560	ASSEMBLY CALF PAD INDEPENDENT MPS	69	B0266	SEAT ANGLE LOCATOR
20	A5562	ASSEMBLY PAD PLANAR 5" X 7"	70	A3045	SLIP COVER PLANAR 7" X 7"
21	A5564	ASSEMBLY PAD PLANAR 5" X 9"	71	A3046	SLIP COVER PLANAR 7" X 9"
22	A5566	ASSEMBLY CONTOUR PELVIC 5" XS	72	A3047	SLIP COVER CONTOUR BACK 7" XS
23	A5568	ASSEMBLY CONTOUR BACK 5" XS	73	A3048	SLIP COVER CONTOUR BACK 7" SM
24	A5570	ASSEMBLY CONTOUR PELVIC 5" SM	74	A5630	ASSEMBLY ELBOW ARM PAD MPS XS
25	A5572	ASSEMBLY CONTOUR BACK 5" SM	75	A5678	ASSEMBLY CALF PAD 4.5" X 4.5"
26	A5574	ASSEMBLY HIP GUIDES MPS XS	76	A5729	MULTI-ADJ KNEE PADS 4.25"
27	A3011	POSITIONING BELT ADJUSTABLE XS	77	A5730	MULTI-ADJ KNEE PADS 5"
28	A3028	SLIP COVER PLANAR 5" X 7"	78	A5731	ASSEMBLY KNEE DEPTH STOP
29	A3029	SLIP COVER PLANAR 5" X 9"	79	T50302	NON-STRETCH X-STYLE CHEST VEST 9.5" X 9" W
30	A3030	SLIP COVER CONTOUR PELVIC 6" XS	80	T50304	NON STRETCH X-STYLE CHEST VEST 11" X 9.5" W
31	A3031	SLIP COVER CONTOUR BACK 5" XS	81	A5724	ASSEMBLY POSTERIOR KNEES 3.5" DING 1
32	A3032	SLIP COVER CONTOUR PELVIC 5" SM	82	A5726	ASSEMBLY POSTERIOR KNEES 5" DING 1
33	A3033	SLIP COVER CONTOUR BACK 5" SM	83	A5743	ASSEMBLY LATERAL GUIDES MPS SM
34	A5576	ASSEMBLY LATERAL GUIDES MPS XS	84	A5744	ASSEMBLY LATERAL GUIDES MPS SM
35	A5578	ASSEMBLY LATERAL W/ ELBOW PAD MPS XS	85	B3049	SLIP COVER 6" LATERAL PAD
36	A5580	ASSEMBLY LATERAL W/ ELBOW PAD MPS XS			
37	T50086	X-STYLE CHEST VEST 8" X 9" W			
38	T50088	X-STYLE CHEST VEST 11" X 9.5" W			
39	Y5626	ASSEMBLY HEAD SUPPORT XS			
40	Y5628	ASSEMBLY HEAD SUPPORT SMALL			
41	A5584	ASSEMBLY HEAD REST CONTOUR SM			
42	A3035	SLIP COVER HEAD REST 5" H X 8" W			
43	A3036	SLIP COVER HEAD REST 6" H X 10" W			
44	A3037	COVER HEAD REST FORM TO FIT			
45	A3038	SLIP COVER 3.5" LATERAL PAD			
46	A5592	ASSEMBLY TRAY ASSEMBLY MOUNT MPS			
47	A5594	ASSEMBLY PUSH HANDLE MPS			
48	A5595	ASSEMBLY TABLE MOUNT BASIC MPS			
49	A5596	TRAY BLE MOLDED 11" X 19" W			
50	A5599	ASSEMBLY TABLE MOUNT TILT MPS			

Parts Detail-Tilt Table Supine



ITEM NO.	PART NO.	NAME	ITEM NO.	PART NO.	NAME
1	A5522	ASSEMBLY BASE ZING SUPINE	46	A30685	SLIP COVER 14" X 14"
2	A5526	ASSEMBLY CASTERS BASIC MPS	47	A30684	SLIP COVER 16" X 14"
3	A5528	ASSEMBLY GAS SPRING LIFT MPS	48	A30685	SLIP COVER 16" X 4"
4	A5632	ASSEMBLY LEGS TT STANDARD	49	A5660	ASSEMBLY SLIP COVERS LEG PAD 4" TT
5	A5634	ASSEMBLY LEGS TT ABDUCTION	50	A5662	ASSEMBLY SLIP COVERS LEG PAD 6"
6	A5536	ASSEMBLY PLATFORM FOOT PLATE MPS	51	A5664	ASSEMBLY SLIP COVERS LEG PAD 8"
7	A5540	ASSEMBLY FOOT PLATE MPS EI	52	A30686	SLIP COVER PLANAR HEAD SUPPORT XS
8	A5542	FOOT HOLDERS 7.75" L X 3.25" W	53	A30337	SLIP COVER 3.5" LATERAL PAD
9	A5544	FOOT HOLDERS 9.75" L X 4" W	54	A5666	ASSEMBLY KNEE STRAP TT 4" PADS
10	A5546	ASSEMBLY SECURE FOOT STRAPS XS	55	A5668	ASSEMBLY KNEE STRAP TT 6" PADS
11	A5548	ASSEMBLY FOOT STRAPS XS	56	A5670	ASSEMBLY KNEE STRAP TT 8" PADS
12	A5556	ASSEMBLY KNEE MULTI-ADJUSTABLE XS	57	A5672	ASSEMBLY STRAP W/PAD 25" - 38"
13	A5558	ASSEMBLY KNEE MULTI-ADJUSTABLE SM	58	A5674	ASSEMBLY CHEST STRAP W/PAD TT
14	A5636	ASSEMBLY HIP GUIDES TT XS	59	A5676	ASSEMBLY HEAD REST MOUNT ZING TT
15	A3035	SLIP COVER HEAD REST XS	60	A3062	POSITIONING BELT ADJUSTABLE TT
16	A3036	SLIP COVER HEAD REST SM	61	A5550	ASSEMBLY KNEE PAD SOFT MPS
17	A3037	COVER HEAD REST CONTOUR SM	62	A5560	ASSEMBLY CALF PAD INDEPENDENT MPS
18	A5597	ASSEMBLY TRAY SWING AWAY MPS	63	A5678	ASSEMBLY CALF PAD 4.5" X 4.5"
19	A5594	ASSEMBLY PUSH HANDLE MPS	64	T50080	ASSEMBLY FOOT STRAP PED
20	A5595	ASSEMBLY TABLE MOUNT BASIC MPS	65	T50082	ASSEMBLY FOOT STRAP SECURE PED
21	A5596	TRAY BLK MOLDED 11" X 19" W	66	T50086	X-STYLE CHEST VEST 9.5" X 9" W
22	A5599	ASSEMBLY TABLE MOUNT TILT MPS	67	T50088	X-STYLE CHEST VEST 11" L X 9.5" W
23	A5600	ASSEMBLY TRAY SWING AWAY MPS	68	Y5426	ASSEMBLY HEAD SUPPORT XS
24	A5602	ASSEMBLY TRAY SWING AWAY CLEAR MPS	69	Y5428	ASSEMBLY HEAD SUPPORT SMALL
25	A5604	ASSEMBLY FOREARM WINGS MPS	70	A5686	ASSEMBLY HEAD REST CONTOUR SM
26	A5606	ASSEMBLY FOREARM WINGS CLEAR MPS	71	A5727	MULTI-ADJ KNEE PAD 4.25"
27	A3038	PADDED SLIP COVER TRAY MPS	72	A5730	MULTI-ADJ KNEE PAD 5"
28	NG50042	SUPPORT GRIP OPTION	73	A5731	ASSEMBLY KNEE DEPTH STOP
29	A5608	ASSEMBLY CASTERS DIRECTIONAL MPS	74	T50302	NON-STRETCH X-STYLE CHEST VEST 9.5" L X 9" W
30	A5612	ASSEMBLY DUAL LIFT CONTROL MPS XS	75	T50304	NON-STRETCH X-STYLE CHEST VEST 11" L X 9.5" W
31	A5614	ASSEMBLY GAS SPRING LOCK OUT	76	A5734	ASSEMBLY POSTERIOR KNEES 3.5" ZING T
32	A5624	MULTI-ADJUSTABLE FOOT PLATE 6" L X 3" W	77	A5736	ASSEMBLY POSTERIOR KNEES 5" ZING T
33	A5626	MULTI-ADJUSTABLE FOOT PLATE 7.75" L X 3.25" W	78	A5745	ASSEMBLY LATERAL GUIDES TT 4" - 8"
34	A5628	MULTI-ADJUSTABLE FOOT PLATE 9.75" L X 4" W	79	A5746	ASSEMBLY LATERAL GUIDES TT 4" - 8"
35	80809	TOOL POUCH	80	A5747	ASSEMBLY LATERAL GUIDES TT 4" - 8" CURVED
36	80246	SEAT ANGLE LOCATOR	81	A5748	ASSEMBLY LATERAL GUIDES TT 4" - 8"
37	A5638	ASSEMBLY PAD ZING PLANAR 14" X 14"	82	B3049	SLIP COVER 8" LATERAL PAD
38	A5640	ASSEMBLY PAD ZING PLANAR 16" X 14"			
39	A5642	ASSEMBLY PAD ZING PLANAR 18" X 14"			
40	A5644	ASSEMBLY LEG PAD ZING TT 4"			
41	A5646	ASSEMBLY LEG PAD ZING TT 6"			
42	A5648	ASSEMBLY LEG PAD ZING TT 8"			
43	A5650	ASSEMBLY HEAD PAD ZING PLANAR			
44	A5652	ASSEMBLY LATERAL GUIDES TT 4" - 8"			
45	A5654	ASSEMBLY LATERAL GUIDES TT 7" - 11"			

Parts Detail-Prone



Parts Detail-Prone

ITEM NO.	PART NO.	NAME	ITEM NO.	PART NO.	NAME
1	A5522	ASMBLY BASE ZING SUPINE	41	A5704	ASMBLY LATERAL GUIDES PRONE 7" - 11"
2	A5526	ASMBLY CASTERS BASIC MPS	42	A5610	ASMBLY CHEST STRAP MPS
3	A5528	ASMBLY GAS SPRING LIFT MPS	43	A3028	SLIP COVER PLANAR 5" X 7"
4	A5614	ASMBLY GAS SPRING LOCK OUT	44	A3029	SLIP COVER PLANAR 5" X 9"
5	A5530	ASMBLY LEGS MPS STANDARD	45	A5616	ASMBLY PAD PLANAR 7" X 9"
6	A5532	ASMBLY LEGS MPS ABDUCTION	46	A5618	ASMBLY PAD PLANAR 7" X 9"
7	A5724	ASMBLY MAST ZING PRONE	47	A3084	SLIP COVER PLANAR 5" X 5"
8	A5550	ASMBLY KNEE PAD SOFT MPS	48	A3045	SLIP COVER PLANAR 7" X 7"
9	A5280	ASMBLY PLATFORM FOOT PLATE PRONE	49	A3042	SLIP COVER PLANAR 7" X 9"
10	A5688	ASMBLY KNEE SUPPORT PRONE XS	50	A5704	ASMBLY FACE APERTURE LOW
11	A5690	ASMBLY KNEE SUPPORT PRONE SM	51	A5708	ASMBLY FACE APERTURE HIGH
12	A5540	ASMBLY FOOT PLATE MPS EI	52	A5710	ASMBLY SUP COVERS FACE PROMPT 9"
13	A5542	FOOT HOLDERS 7.75" L X 3.25" W	53	A5604	ASMBLY FOREARM WINGS MPS
14	A5544	FOOT HOLDERS 9.75" L X 4" W	54	A5606	ASMBLY FOREARM WINGS CLEAR MPS
15	A5538	ASMBLY FOOT PLATE MPS MULTI-ADJ	55	A3038	PADDED SLIP COVER TRAY MPS
16	A5624	MULTI-ADJUSTABLE FOOT PLATE MPS EI	56	NG50042	SUPPORT GRIP OPTION
17	A5626	MULTI-ADJUSTABLE FOOT PLATE MPS XS	57	80809	TOOL POUCH
18	A5628	MULTI-ADJUSTABLE FOOT PLATE MPS SM	58	80246	SEAT ANGLE LOCATOR
19	T50082	ASMBLY FOOT STRAP SECURE PED	59	A5712	ASMBLY TRAY BASIC ZING VERTICAL
20	T50080	ASMBLY FOOT STRAP PED	60	A5714	ASMBLY TRAY ANGLE PRONE BLACK
21	A5546	ASMBLY SECURE FOOT STRAPS XS	61	A5718	ASMBLY TRAY ANGLE PRONE CLEAR
22	A5548	ASMBLY FOOT STRAPS XS	62	A5608	ASMBLY CASTERS DIRECTIONAL MPS
23	A5562	ASMBLY PAD PLANAR 5" X 7"	63	A5720	ASMBLY HANDLES PRONE SIZE I
24	A5564	ASMBLY PAD PLANAR 5" X 9"	64	A3092	QUICK STRAP ZING XS
25	A5566	ASMBLY CONTOUR PELVIC 5" XS	65	A3093	QUICK STRAP WITH PAD ZING XS
26	A5570	ASMBLY CONTOUR PELVIC 5" SM	66	A5725	ASMBLY DUAL LIFT CONTROL PRONE
27	A3030	SLIP COVER CONTOUR PELVIC 5" XS	67	A5726	ASMBLY KNEE STRAP PRONE SIZE I
28	A3032	SLIP COVER CONTOUR PELVIC 5" SM	68	A3011	POSITIONING BELT ADJUSTABLE 25" - 38"
29	A5574	ASMBLY HIP GUIDES MPS XS	69	A5727	MULTI-ADJ KNEE PAD 4.25"
30	A3039	SLIP COVER 3.5" LATERAL PAD	70	A5728	MULTI-ADJ KNEE PAD 5"
31	A5592	ASMBLY PAD PLANAR 5" X 3"	71	A5731	ASMBLY KNEE DEPTH STOP
32	A5694	ASMBLY PAD F2F PRONE 5" H X 10" W	72	A5749	ASMBLY LATERAL GUIDES PRONE 4" - 8"
33	A5696	ASMBLY PAD F2F PRONE 5" H X 12" W	73	A5750	ASMBLY LATERAL GUIDES PRONE 7" - 11"
34	A5698	ASMBLY PAD F2F PRONE 7" H X 10" W	74	A5751	ASMBLY LATERAL GUIDES PRONE 4" - 8"
35	A5700	ASMBLY PAD F2F PRONE 7" H X 12" W	75	A5752	ASMBLY LATERAL GUIDES PRONE 7" - 11"
36	A3085	SLIP COVER F2F PRONE 5" H X 10" W	76	B3049	SLIP COVER 6" LATERAL PAD
37	A3086	SLIP COVER F2F PRONE 5" H X 12" W			
38	A3087	SLIP COVER F2F PRONE 7" H X 10" W			
39	A3088	SLIP COVER F2F PRONE 7" H X 12" W			
40	A5702	ASMBLY LATERAL GUIDES PRONE 4" - 8"			

AltimateMedical

262 West 1st St.
Morton, MN 56270 USA
Toll Free: 800.342.8968 or 507.697.6393
Fax Free: 877.342.8968 or 507.697.6900
email: info@easystand.com
easystand.com

Assembly Manual



Medical Product Service GmbH
Borngasse 20
35619 Braunfels
Deutschland



MPS Medical Product Service UK Ltd
Northgate House
Northgate Street
Devizes
Wiltshire England SN10 1JX



MPS Medical Product Service Switzerland, CO/Accumed Sagl
Morbio Inferiore
Viale Serfontana 10
CH-6834 Switzerland



Standing technology should only be used under the guidance of a physician with recommendations for standing program protocol and any medical precautions. Standing programs should be monitored by the attending therapist. AMI maintains a policy of continual product improvement and reserves the right to change features, specifications, and prices without prior notification. Check with AMI for latest info.
FORM ZING1ASSEM 092623 REV A Copyright © 2023 Altimate Medical, Inc. All rights reserved. Printed in the U.S.A.