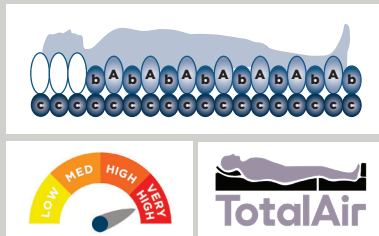


Healthcare
furniture,
enhancing
lives.

Caremed Alrick.

Total FlowMax

with remote



CM-M-FAS Total Flow Max – a replacement alternating pressure relieving mattress system with triple cell-on-cell air cells, a static base section and an in-use height of 8" for effective prevention and treatment of patients at very high risk of developing a pressure ulcer in hospital, nursing and care home environments.

With simple to use settings and functionality, the Total Flow Max enables the care provider to quickly set up the mattress system and have it operating at optimal pressure for a specific user with ease.

The wide range of features make the Total Flow Max a highly versatile and cost effective solution which has been manufactured to comply with the most stringent quality and in-use guidelines.

Total Flow Max incorporates cutting-edge Total Air Technology - constant auto pressure sensing through an air sensor and microcomputer regulator to provide ultra-low interface pressure and promote an even ambience for natural sleep patterns and stable blood circulation with silent pump operation.

TECHNICAL SPECIFICATION

Mattress Specification

- > Mattress Dimensions:
Single
200 x 90 x 20 cm
King Single
200 x 107 x 20 cm
- > Mattress Weight: 10kg
- > Cell Structure: Triple cell-on-cell
- > CPR: Quick release toggle
- > Max Load: 200kg
- > Heel function (3 x heel cells with one way valves)

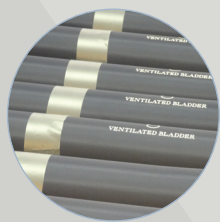
Pump Specification

- > Operating System:
Total Air Technology
- > Pump Dimensions:
34.5 x 24 x 12.5 cm
- > Pump Weight: 2.8kg
- > Cycle Time: 10, 15, 20, 25 minutes
- > Memory function
- > Air Output: 8 litres/minute
- > Power Input:
AC220-240V, 50-60Hz
- > Power Consumption: 7W
- > Fitted with hanging brackets

Cover Specification

- > Multi-stretch PU
- > Vapour permeable
- > Water resistant
- > Machine washable
- > Antimicrobial
- > 360 degree zipper
- > White underside of cover

KEY FEATURES AND BENEFITS



Nylon TPU coated cells



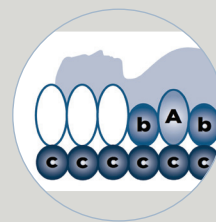
Independently removable cells



Removable heel cells



Remote control



Pillow function



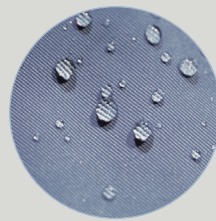
CPR release



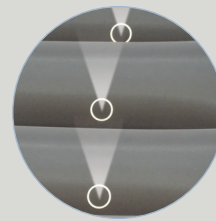
Anchoring straps



Zipped storage bag



Multi-stretch, waterproof & vapour permeable PU cover



Micro-perforated cells



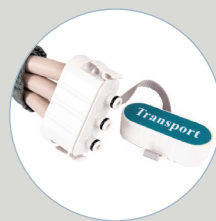
Antimicrobial, machine washable



360 Degree zipper



Robust pump connection



Transport mode

CONTROL PANEL

Digital LED display for ease use

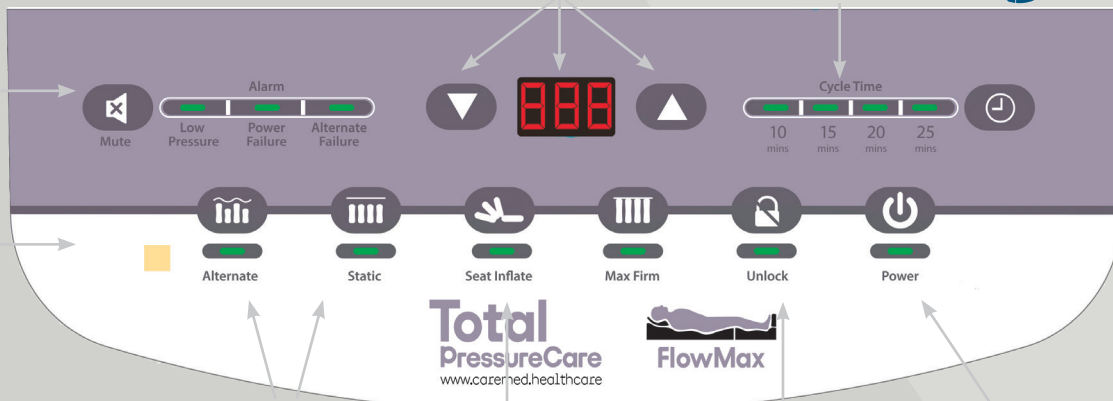
Digital patient weight input

Multiple cycle time control for efficiency



Silent pump operation to avoid disturbance

Visual and audible warning of air loss, power failure and alternate failure



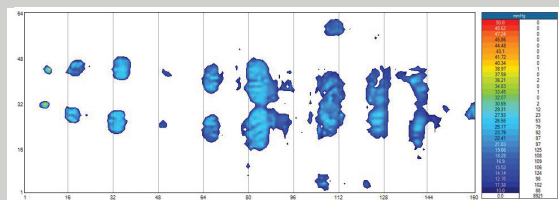
Remote control communication

Static/alternating modes

Seat inflation for additional surface support to facilitate the sitting position

Control panel lock to prevent unauthorised or accidental tampering (hold for 2 sec)

Power on



Clinical pressure mapping evaluation

Australia

VIC
2/77 Ricky Way
Epping
VIC 3076

NSW
104 Loughnan Street
Lake Cargelligo
NSW 2672

T 1800 282 001
sales@caremed.healthcare
www.caremed.healthcare

United Kingdom

Port Stanley House
Falkland Close
Coventry, CV4 8AU

T 01926 889677
updates@caremed.healthcare
www.caremed.healthcare

E & O.E.