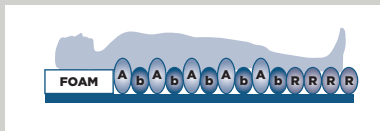


Healthcare
furniture,
enhancing
lives.

Caremed Alrick.



Total FlowHybrid



CM-CMBR Total Flow Hybrid Mattress With Evacuation – the high/very high risk Total Flow Hybrid is the world's first 4 in 1 hybrid mattress. The sophisticated mattress design provides effective comfort, care and pressure redistribution and relief for patients in hospital, nursing and care home environments.

The Total Flow Hybrid can be used just as a high specification foam pressure redistribution mattress, also doubling up with balanced-air self-adjusting foam-filled air cells, and the option to add a choice of pumps to provide alternating pressure, and a built in Alerta Evacuation System of handles and straps.

The air cells are contained within a high density foam perimeter which creates a smooth transition from the side rail to the air cell.

No requirement to remove patient from bed to change from foam system to alternating air system.

Total Flow Hybrid also boasts a unique adaptable heel zone with gel-foam pads, individually removable to reduce to zero pressure on the heel as required for unrivalled pressure redistribution and improved circulation.

TECHNICAL SPECIFICATION

Mattress Specification

- > Mattress dimensions:
Single
197 x 90 x 15 cm
King Single
197 x 105 x 15cm
- > Max load capacity:
250Kgs
- > Min load capacity: 30Kgs

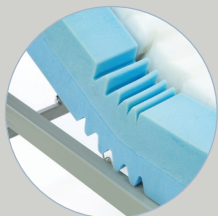
Cover Specification

- > Multi-stretch and vapour permeable PU
- > Water resistant and machine washable
- > Antimicrobial with white underside
- > BS7177: Crib 5
- > Fire evacuation strap system

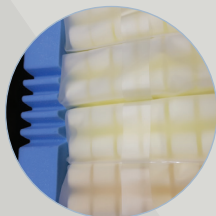
PRODUCT CODES

- Total Flow-Hybrid mattress only
CM-CMBR-M
- Total Flow-Hybrid mattress
c/w Total Flow-Hybrid Pump
CM-CMBR

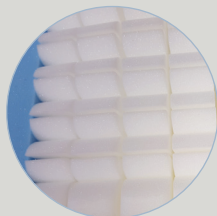
KEY FEATURES AND BENEFITS



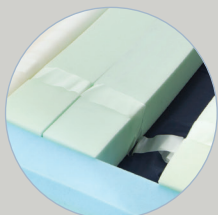
Profiling side sections
– 8 points



Self adjusting foam
filled air cells



Castellated head section
for unique comfort



Adaptable heel zone with
removable gel-foam pads



Evacuation straps and handles



Total Flow-Hybrid Pump



ALT-HYB-05 Pump Spec

- > Operating System: Total Air Technology
- > Pump Dimensions:
34.5 x 24 x 12.5 cm
(13.5 x 9.4 x 4.9")
- > Pump Weight: 2.8kg (6.1lb)
- > Cycle Time: 10, 15, 20, 25 minutes
- > Memory function
- > Power Input:
AC220–240V, 50-60Hz
- > Power Consumption: 7W
- > Fitted with hanging brackets
- > Alternate/Static modes
- > Low pressure, Power failure & Alternate failure,
visual & audible alarm
- > Max firm
- > Panel lock

CONTROL PANEL

Auto pressure sensing for consistent distribution of air

Visual and audible warning of air loss, power failure and alternate failure

Control panel lock to prevent unauthorised or accidental tampering (hold for 2 sec)

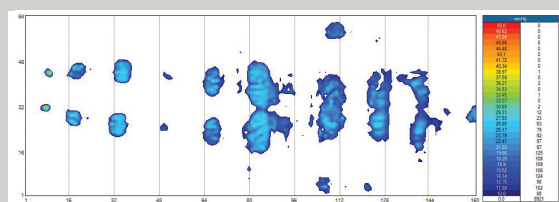
Silent pump operation to avoid disturbance

Multiple cycle time control for efficiency

The control panel features a central circular weight setting knob with markings from 30 to 250 KG. To the left, there are indicators for Mute, Low Pressure, Power Failure, and Alternate Failure, each with a corresponding icon and a green bar. Below these are an Unlock button and a Max Firm indicator. To the right, there is a Cycle Time selector with options for 10, 15, 20, and 25 minutes, and buttons for Alternate and Static modes. The panel also displays the 'Total PressureCare' logo and the 'FlowHybrid' logo.

Static/alternating modes

Weight setting control knob



Clinical pressure mapping evaluation

Australia

VIC
2/77 Ricky Way
Epping
VIC 3076

NSW
104 Loughnan Street
Lake Cargelligo
NSW 2672

T 1800 282 001
sales@caremed.healthcare
www.caremed.healthcare

United Kingdom

Port Stanley House
Falkland Close
Coventry, CV4 8AU

T 01926 889677
updates@caremed.healthcare
www.caremed.healthcare

E & O.E.