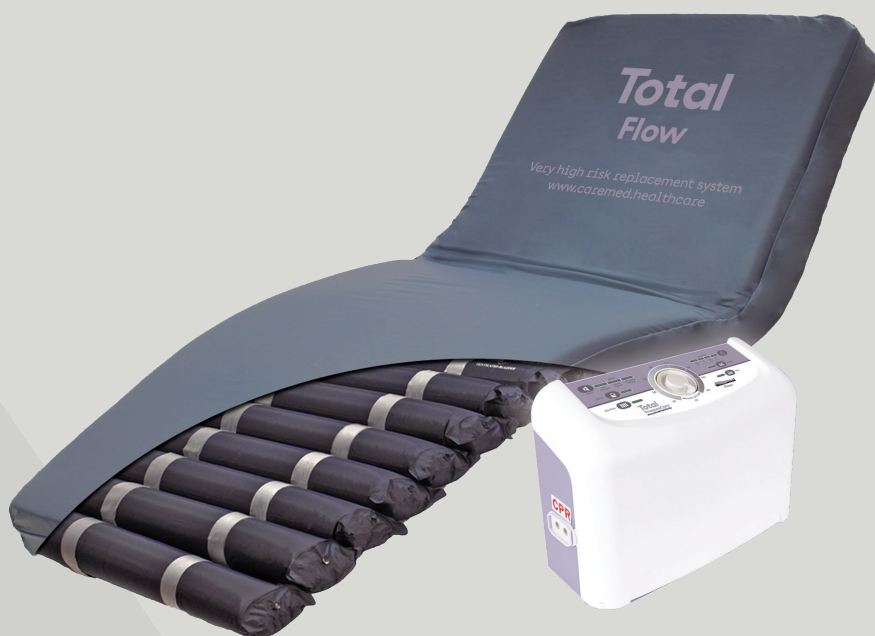
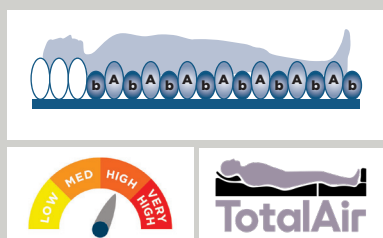


Healthcare
furniture,
enhancing
lives.

Caremed Alrick.

Total Flow



CM-M-OL Total Flow – an overlay alternating pressure relieving mattress system with 5" air cells for effective prevention and treatment of patients at high risk of developing a pressure ulcer in hospital, nursing and care home environments.

With simple to use settings and functionality, the Total Flow enables the care provider to quickly set up the mattress system and have it operating at optimal pressure for a specific user with ease.

The wide range of features make the Total Flow a highly versatile and cost effective solution which has been manufactured to comply with the most stringent quality and in-use guidelines.

Total Flow incorporates cutting-edge Total Air Technology - constant auto pressure sensing through an air sensor and microcomputer regulator to provide ultra-low interface pressure and promote an even ambience for natural sleep patterns and stable blood circulation with silent pump operation.

TECHNICAL SPECIFICATION

Mattress Specification

- > Mattress Dimensions:
200 x 90 x 12.7 cm
(78.5 x 35.5 x 5")
- > Mattress Weight: 5.5kg (12.1lb)
- > Cell Structure: Cell-on-cell
- > CPR: Quick release toggle
- > Max Load: 160kg (353lb)

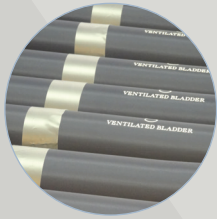
Pump Specification

- > Operating System:
Total Air Technology
- > Pump Dimensions:
34.5 x 24 x 12.5 cm
(13.5 x 9.4 x 4.9")
- > Pump Weight: 2.8kg (6.1lb)
- > Cycle Time: 10, 15, 20, 25 minutes
- > Memory function
- > Air Output: 8 litres/minute
- > Power Input:
AC220–240V, 50-60Hz
- > Power Consumption: 7W
- > Fitted with hanging brackets

Cover Specification

- > Multi-stretch PU
- > Vapour permeable
- > Water resistant
- > Machine washable
- > Antimicrobial
- > 360 degree zipper
- > White underside of cover

KEY FEATURES AND BENEFITS



Nylon TPU coated cells



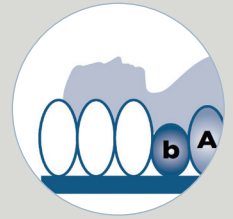
Independently removable cells



Covert sealed air cells



Transport mode



Pillow function



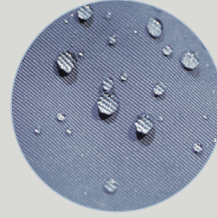
CPR release



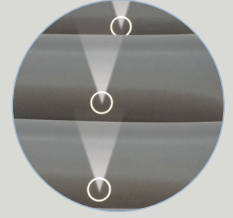
Anchoring straps



Zipped storage bag



Multi-stretch, waterproof & vapour permeable PU cover



Micro-perforated cells



Antimicrobial, machine washable



360 Degree zipper



Robust pump connection

CONTROL PANEL

Auto pressure sensing for consistent distribution of air

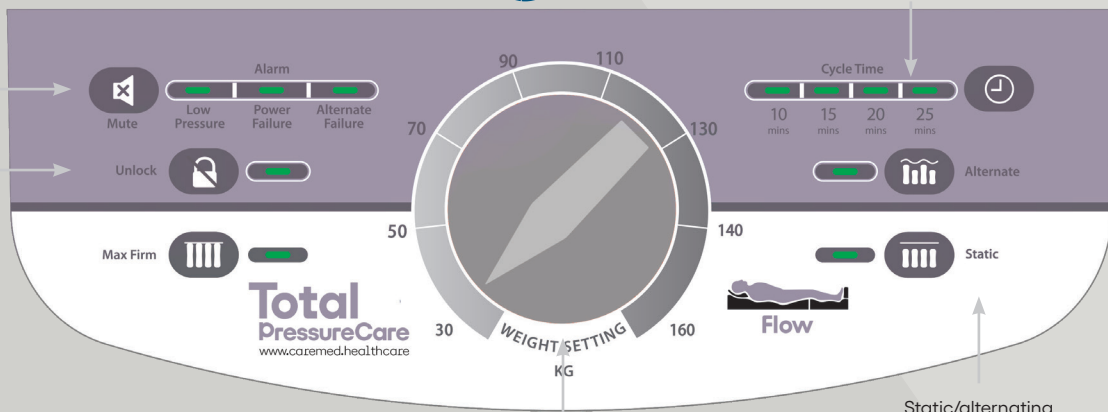
Visual and audible warning of air loss, power failure and alternate failure

Control panel lock to prevent unauthorised or accidental tampering (hold for 2 sec)



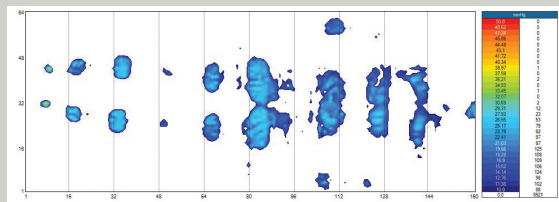
Silent pump operation to avoid disturbance

Multiple cycle time control for efficiency



Weight setting control knob

Static/alternating modes



Clinical pressure mapping evaluation

Australia

VIC
35 Temple Drive
Thomastown
VIC 3074

NSW
104 Loughnan Street
Lake Cargelligo
NSW 2672

T 1800 282 001
sales@caremed.healthcare
www.caremed.healthcare

United Kingdom

Port Stanley House
Falkland Close
Coventry, CV4 8AU

T 01926 889677
updates@caremed.healthcare
www.caremed.healthcare