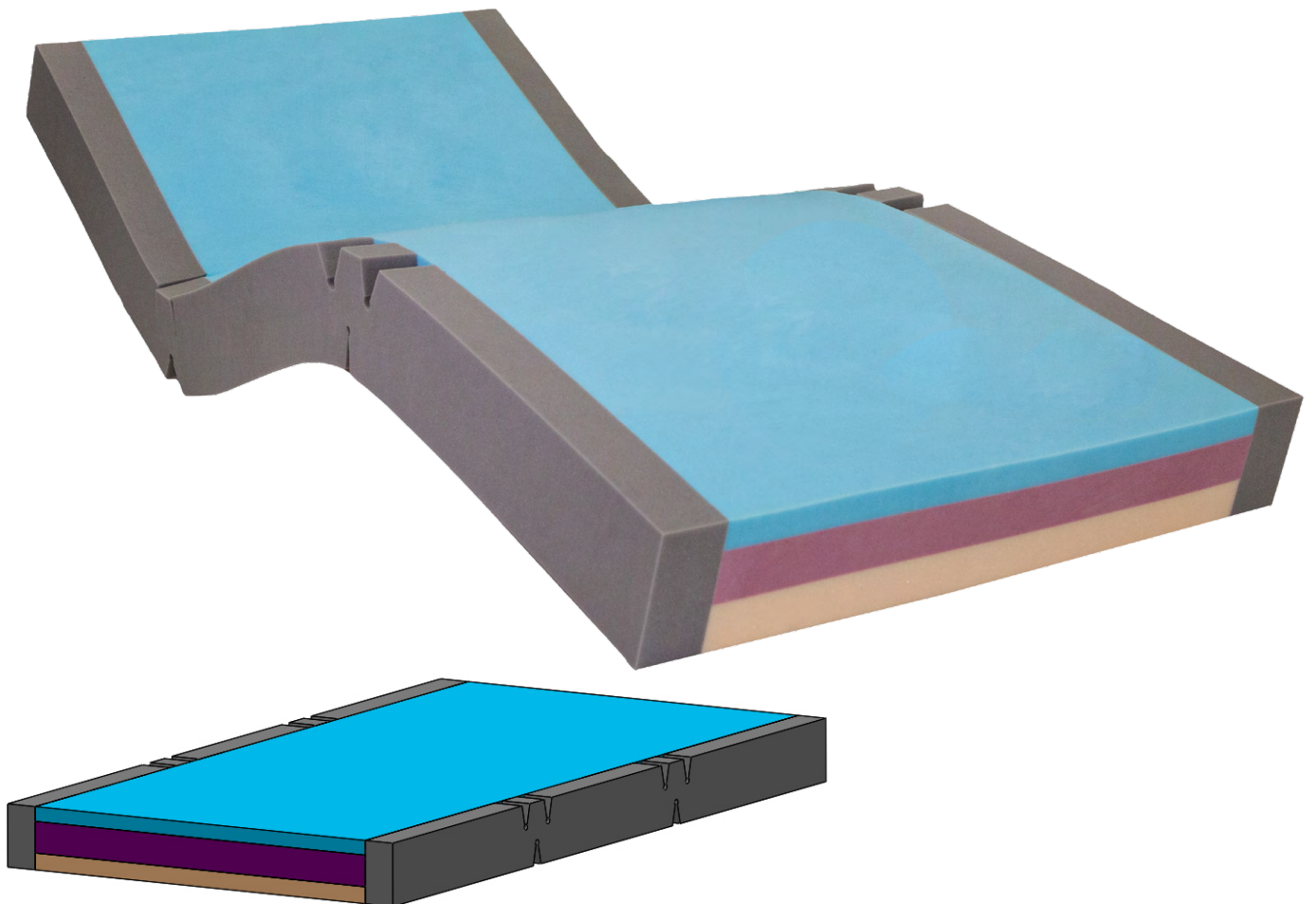


Healthcare
furniture,
enhancing
lives.

Caremed Alrick.

M9300 Bariatric 3 Layer
Mattress

Vapour permeable
upper to draw moisture
away from skin



Our 3 Layer Mattress is a clinically evaluated pressure care mattress. High quality Premium grade foam is used in all 3 layers, Graded Lower, Mid and Upper Cores. This graded 3 layer construction has strengthened sides to enhance mattress stability. The heavy duty PVC base provides a durable base to promote cover longevity and minimize wear caused by mattress sliding on bed base. Further research & development has enabled us to develop this pressure care mattress for bariatric patients, with an impressive SWL of 300KG!

Specifications

Overall Dimensions	1960 x 1050 x 150mm - King Single 1960 x 1150 x 150mm - Extra Wide 1960 x 1350 x 150mm - Double 1960 x 1480 x 150mm - Queen 1960 x 1780 x 150mm - King
Product Codes	M9300KS - King Single M9300EW - Extra Wide M9300D - Double M9300Q - Queen M9300K - King
SWL	300kg
Warranty	2 yr

Features



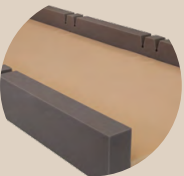
- VISCO-GRADE, PREMIUM UPPER IMMERSION LAYER**
 - Alleviates localised pressure points
 - Provides maximum contact with patient for distribution of interface pressure
 - High temperature stability to deliver consistent immersion, performance and comfort
 - Visco-elastic cell structure provides low-shear surface and immersion



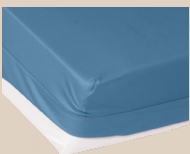
- PROFILE STABILISING SIDES**
 - Enables ease of primary patient care
 - Facilitates patient transfers
 - Unique hinge points allow mattress to easily conform to varied bed positions
 - Encourages central patient positioning



- TRIPLE LAYERED CORE**
 - Premium Grade Mid Level, provides open cell high quality foam
 - Provides exceptional comfort and postural support for repositioning and patient care
 - Foam conforms to AS/NZS 4088.1 (Int):1993 and FMVSS302 & SAE T2002
 - Anti-microbial treatment applied to foam maximises longevity and core micro-climate



- FIRM BASE LAYER**
 - Provides protection against 'bottoming-out' during transfer, repositioning and whilst in the inclined/fowler position
 - Provides exceptional comfort, support for repositioning and patient care
 - Premium quality, high performance foam



- COVER**
 - 4-Way Stretch for shear protection
 - Vapour permeable and breathable
 - Flexible and gentle to the skin
 - Fire retardant, meets BS 6807 ignition source 5 and BS 7175 ignition source 5 standards
 - Anti-microbial protection, resistant to patient body fluids

HEAVY DUTY PVC BASE

- Durable
- Protects foam core against the bed base
- Reduces shearing forces by sliding against bed base as the bed profiles
- Meets fire retardant specifications: ASTM D6413 PASS, AS1441.13-1973 - PASS, AS1530.3-1999 - 14,0,0,5